



# NATIONAL WOOD EXPO

## 24 & 25 May 2025

The National Wood Expo is being held at:  
**Cosmopolitan Club**  
11 Logan Street, Upper Hutt, Wellington

Sponsored by



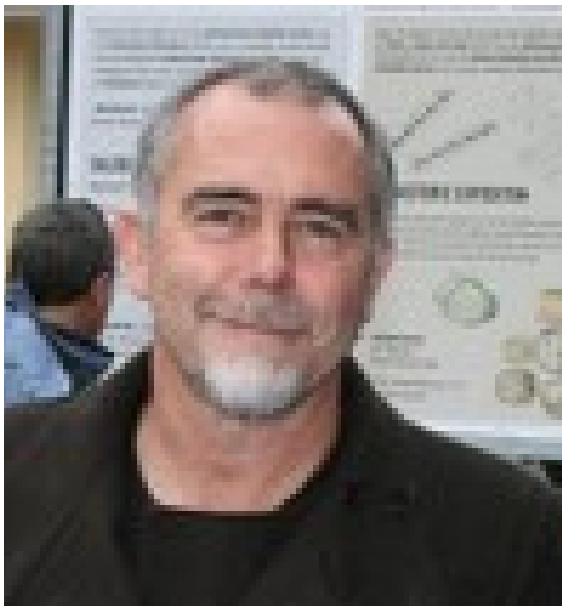
<https://www.carbatec.co.nz>

### Saturday 24 May 2025

07.30am....Doors Open - Access to Trade Hall

08.30am....Welcome

08.45am Demo by Rolly Munro



Rolly Munro has been sculpting wood since the early 1980's. His work has been inspired by land forms & coastal areas of New Zealand and he works mainly in native timbers. Most of his large commissioned sculptures have been done in Pinus radiata, one of the biggest being the five pine sculptures owned by South Waikato District Council which took Rolly six months to complete in 1989. He is well known for designing excellent hollowing tools - a result of over 15 years of experimentation and testing.

10.15am....Morning Tea

10.45am Demo by Emma James-Ries



Having a love and background in Fine Arts, Emma was thrilled to discover the craft of Woodturning 6 years ago. She saw the potential canvases and a whole new world of creative expression. Thus began her journey of marrying fine arts with woodturning. Emma's work is heavily inspired by the botanical flora and fauna of NZ and mostly features pyrography and subtle colour.

12.15pm....Light Lunch and Raffle Draw

1.00pm.....NAW AGM AGENDA (Free to Attend):

1. Welcome
2. Minutes of the 2024 AGM
3. Presidents report
4. Annual Financial Statements
5. Election of Officers
6. General Business



**Come and join us for a fantastic fun filled weekend**

# Saturday 24 May 2025



<https://www.carbatec.co.nz>

## 2.00pm Demo by Neil Turner



Neil, born in 1958 in Western Australia's Wheatbelt, is a highly regarded woodturner & sculptor. His work reflects the natural forces of wind, water and fire, drawing inspiration from the landscapes of his upbringing. Using Australian timbers, Neil creates finely crafted sculptures and furniture that showcase the material's inherent beauty. His work has been exhibited internationally and is included in public and private collections. Now based in Southwest Australia, Neil continues to create, teach, and actively contribute to the art community both locally and abroad.

## 3.30pm.....Afternoon Tea and a break to visit the Trade Hall

## 4.15pm Demo by Kerry Snell



Growing up helping his father build yachts has given Kerry a lifetime love of wood. He was introduced to woodturning when he joined the North Shore Woodturning Guild 28 years ago, since then he has diversified and now classes himself as a woodworker. He has a passion for scrollsawing and both box and veneer work as well as going down the inevitable rabbit holes! Kerrys demo will incorporate Marquetry, inlay with scrollsaw.

## 5.45pm.....Break - Raffle Draw & access to the Bar

## 6.45pm GALA DINNER - \$50 per person - limited space (Cash Bar)



As a celebration of the Wood Expo this will be a chance to meet some demonstrators and suppliers and of course bring along your special smock for the famous Wood Smock Fashion Parade. Raffle & Spot prizes.



### BUFFET DINNER

Glazed ham on the bone

Broccoli and cauliflower mornay

Honey glazed carrots

Roast pumpkin

Roast potatoes

Bread rolls

Pavlova with cream and fruit garnish

Tea and coffee

# Book your place now - It's going to be awesome!

# Sunday 25 May 2025



07.30am.....Doors Open - Access to Trade Hall

09.00am Demo by Rene Baxalle



Rene's love of wood goes back to his childhood, growing up on a farm in south-west France. He has fond memories of whittling little figurines with his pocket-knife from the age of 7 or 8. Rene loves hollowing, and his favourite tool is the humble ring tool. He doesn't like to do the same thing all the time. Once he has mastered a technique he likes to move on and challenge himself to do something different.

10.30am.....Morning Tea

11.00am Demo by Neil Turner



Neil, born in 1958 in Western Australia's Wheatbelt, is a highly regarded woodturner & sculptor. His work reflects the natural forces of wind, water & fire, drawing inspiration from the landscapes of his upbringing. Using Australian timbers, Neil creates finely crafted sculptures & furniture that showcase the material's inherent beauty. His work has been exhibited internationally & is included in public & private collections. Now based in Southwest Australia, Neil continues to create, teach, & actively contribute to the art community both locally & abroad.

12.30pm.....Light Lunch

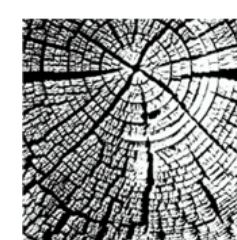
1.15pm Demo by Peter Clemett



Peter is a Committee member of the Christchurch Woodturners Association. His day-job is in an unrelated field, but woodwork has been a life-long interest, with his main focus on woodturning for over two decades. Peter enjoys passing on his knowledge and experience, regularly coaching others, running workshops, or demonstrating within his own Club and further afield.

2.45pm.....Raffle Draw & last minute trade purchases

## To register visit: [www.naw.org.nz](http://www.naw.org.nz)



WOOD GRAIN NZ  
WOODTURNING

TREWORKX sandpapers

### Free Public Access to Trade Hall